

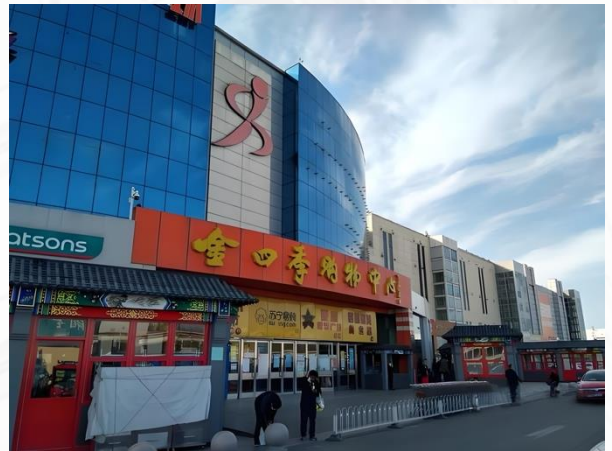
## Safeguarding the Heartbeat of Commerce

The JinSiji Shopping Center (北京金四季购物中心) is a well-established, sizable regional shopping and lifestyle destination in Beijing's Haidian District. It operates as a comprehensive commercial complex catering primarily to families and the surrounding residential communities

### Critical Challenges Faced

JinSiji Shopping Center faced a critical infrastructure transition. The migration of its core data center was not merely a physical move; it was a pivotal moment to address latent vulnerabilities. The existing setup lacked a comprehensive, unified monitoring system for the environment supporting its vital IT infrastructure. Key challenges included:

- **Inadequate Visibility:** No real-time, integrated view of core parameters like temperature, humidity, and power health (UPS), risking hardware failure and downtime.
- **Reactive, Siloed Management:** Separate systems for video, access control, and basic environmental checks led to delayed response to incidents such as air conditioning failures, water leaks, or unauthorized access.
- **Operational & Data Risk:** The absence of proactive alerts and historical data analysis made it difficult to predict issues, optimize energy use, or conduct efficient post-incident reviews, threatening business continuity.

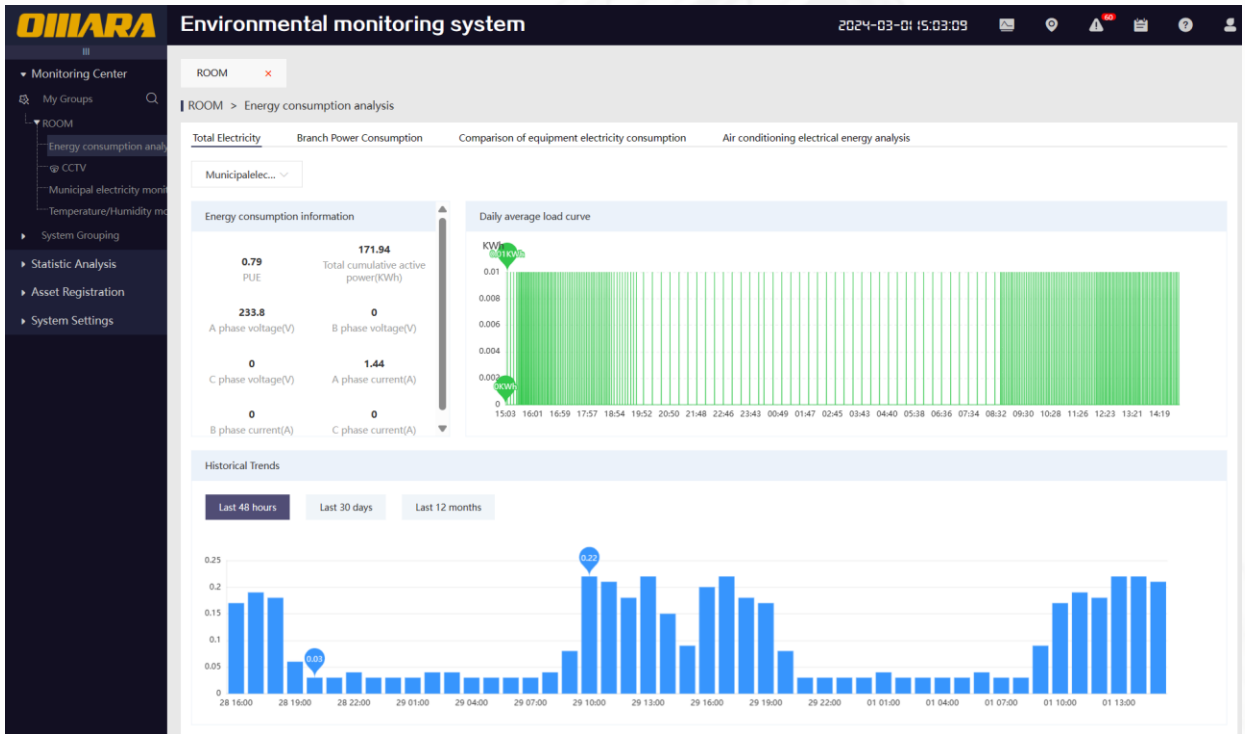


The goal was clear: ensure absolute reliability and safety of the power and environment supporting the data center during and after migration.

### Omara Solution: A Unified, Intelligent Monitoring Ecosystem

Omara delivered an integrated Extra Low Voltage (ELV) Solution designed for 24/7 peace of mind. The solution transformed the new data center into an intelligently managed asset.

- **Comprehensive Sensor Deployment:** A network of precision sensors was installed to monitor temperature, humidity, air quality, water presence, and the status of key equipment including UPS systems, precision air conditioners, and fire suppression systems.
- **Integrated Platform for Unified Control:** All data streams—from environmental sensors, video surveillance, and access control systems—were funneled into a single, centralized monitoring and management platform.
- **Proactive Automation & Alerting:** The system was configured for real-time analysis, automatically generating instant alerts via SMS, email, or platform dashboards for any parameter deviation, enabling pre-emptive action.



## The Results: A Future-Proof Foundation for Operations

Since going live in January 2022, the intelligent monitoring system has become the central nervous system for the shopping center’s data center health, delivering tangible value:

- **Proactive Risk Prevention:** Real-time alerts have eliminated surprise failures. Issues with precision air conditioning or power fluctuations are now identified and resolved before impacting server operations, ensuring zero unplanned downtime post-migration.
- **Unified, Visual Management:** Operations staff now manage the entire environment—from climate and power to security—from a single pane of glass, dramatically improving situational awareness and response efficiency.
- **Data-Driven Decisions & Compliance:** The implemented data archiving and backup function creates a valuable historical record. This enables trend analysis for predictive maintenance, optimizes energy consumption of cooling systems, and provides clear audit trails for compliance and incident analysis.
- **Scalable and Maintainable Infrastructure:** The flexible platform and our committed maintenance and update service ensure the system can adapt to future needs, protecting the customer's investment and continuously strengthening their operational resilience.

In essence, Omara provided more than a monitoring system; we delivered operational confidence, ensuring the JinSiji Shopping Center’s digital core reliably supports every transaction, every day.